

PN25

BRONZE Y-PATTERN STRAINER

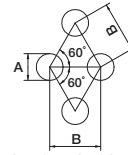
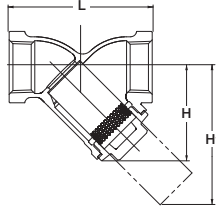
Y-Pattern Body, Screwed Cap,
304 Stainless Steel Screen
Threaded ends to BS21 (JIS B0203)

25 bar at 100°C, 10.5 bar at 186°C, P-T rating : See page 01



Fig. PN25YE

• Threaded ends to BS21(JIS B0203)



HOLE SIZE OF SCREEN

Materials

Parts	Material
Body	Bronze
Body cap	Brass
Screen	Type 304 stainless steel

Screen dimensions

Valve Size	A(ø)	B(mm)
1/2 to 2	1.0	1.5

Dimensions

Nominal Size	mm						
	NPS DN	1/2 15	3/4 20	1 25	1 1/4 32	1 1/2 40	2 50
L Threaded end to end		65	80	92	110	122	150
H Height		42	52	60	72	81	101
H1		56	72	89	107	121	147

PN40

BRASS BALL VALVE, FULL PORT

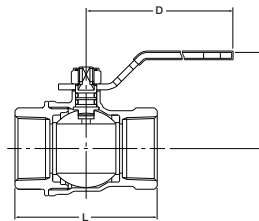
Screwed Body Cap, Blowout-proof Stem,
Double O-ring stem seal,
Threaded ends to BS21(JIS B0203)

40 bar for W.O.G. non-shock, 10 bar at 150°C



Fig. PN40SZA

• Threaded ends to BS21(JIS B0203)



Materials

Parts	Material
Body	Brass
Body cap	Brass
Stem	Brass (nickel plated)
Ball	Brass (chrome plated)
Ball seat	PTFE
O-ring	FKM

Dimensions

Nominal Size	mm						
	NPS DN	1/2 15	3/4 20	1 25	1 1/4 32	1 1/2 40	2 50
L Threaded end to end		53	60	72	84	92	110
H Height		40	43	50	55	65	72
D Length of Handle		80	80	110	110	150	150

PN16

BRONZE SWING CHECK VALVE

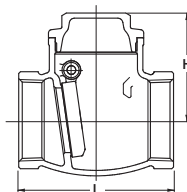
Screwed Cap, Swing Type Disc
Threaded ends to BS21 (JIS B0203)

16 bar at 100°C, 7 bar at 170°C, P-T rating : See page 01



Fig. PN16R

• Threaded ends to BS21(JIS B0203)



Materials

Parts	Material
Body	Bronze
Cap	Brass
Hinge pin	Brass
Disc	Brass

Dimensions

Nominal Size	mm						
	NPS DN	1/2 15	3/4 20	1 25	1 1/4 32	1 1/2 40	2 50
L Threaded end to end		53	61	70	81	91	109
H Height		39	45	50	58	65	75